

# iCover

Peripheral balloon expandable  
PTFE covered stent system

Designed to  
cover all needs



[www.ivascular.global](http://www.ivascular.global)

**iVascular**<sup>®</sup>  
therapies for living

# Able to treat the most tortuous arteries

## iCover

Designed to cover all needs

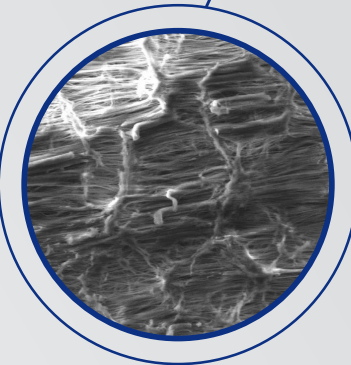
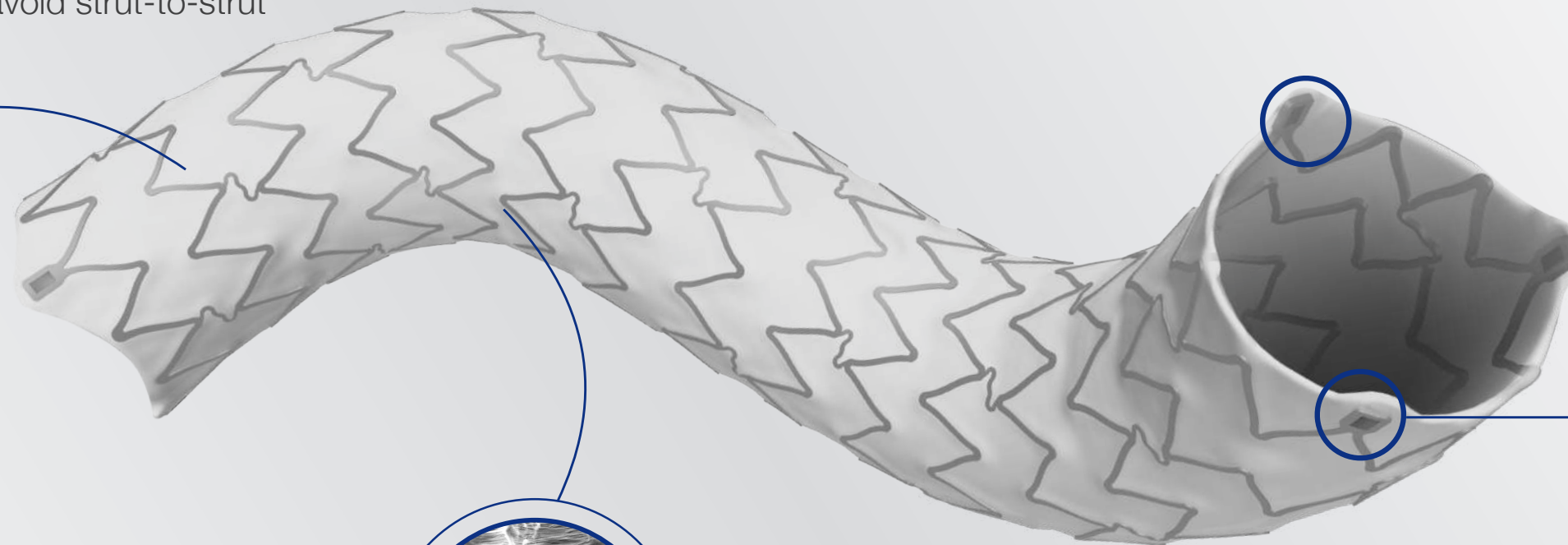
### Enhanced visibility

Unique stent with radiopaque markers to facilitate the implantation and the post-dilation

### ePTFE covered stent with high flexibility

Due to:

- Open cell design and alternated links
- Nested peaks to avoid strut-to-strut contact



### Best in class post-expansion capacity ( $\geq 2\text{mm}$ )

High ePTFE porosity to ensure covered stent post-expansion capacity



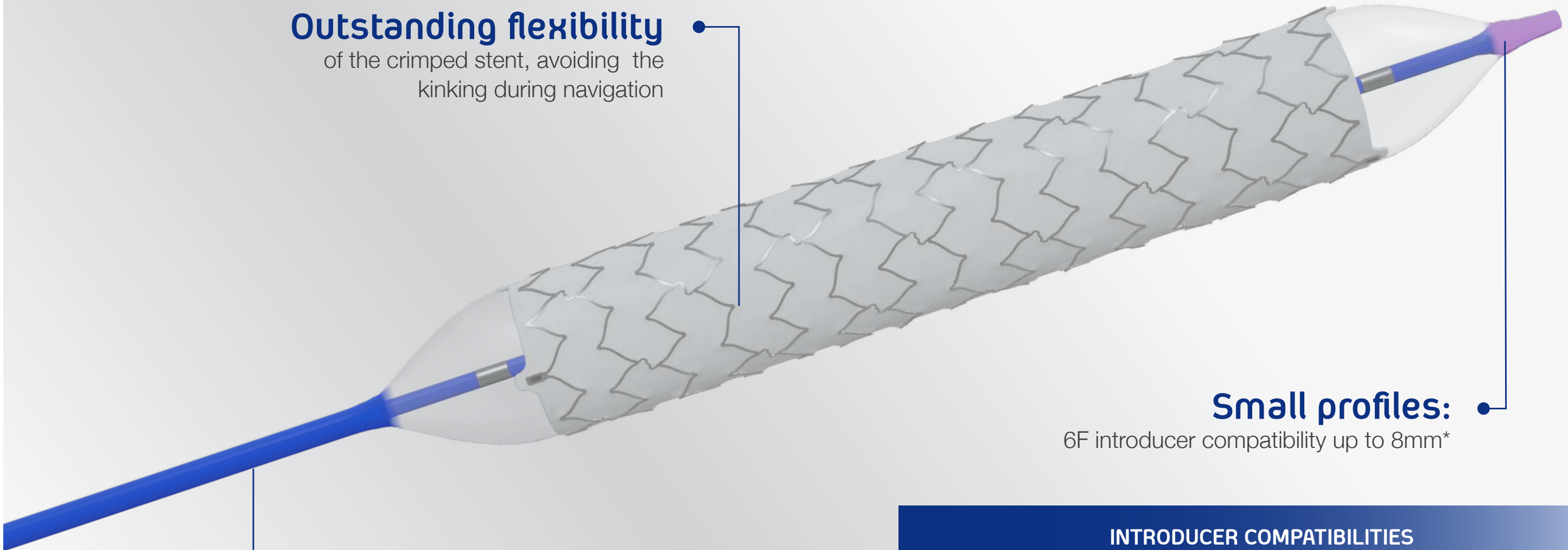
STENT DIMENSIONS		MAXIMUM POST-EXPANSION DIAMETERS						
		STENT DIAMETERS (mm)						
		5	6	7	8	9	10	
STENT LENGTH (mm)	17	$\leq 10\text{mm}$					$\leq 12\text{mm}$	
	27							
	37							
	57							

# Excellent navigability and easy to implant

**iCover**  
Designed to cover all needs

## Outstanding flexibility

of the crimped stent, avoiding the kinking during navigation



## Small profiles:

6F introducer compatibility up to 8mm\*

## Crimped on an Oceanus 35 PTA balloon, offering:

- Short deflation times
- Good pushability and trackability

### INTRODUCER COMPATIBILITIES

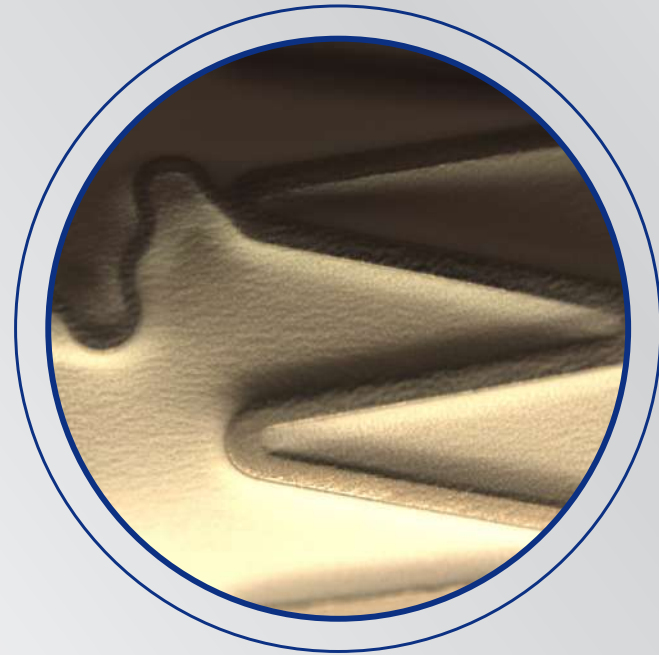
STENT DIMENSIONS		STENT DIAMETERS (mm)					
		5	6	7	8	9	10
STENT LENGTH (mm)	17						
	27						
	37	6F			7F		
	57	6F			7F		

\* 6F up to 8x17 mm and 7F from 8x27mm up to 10 mm.



# iVascular proprietary encapsulation technology

**iCover**  
Designed to cover all needs



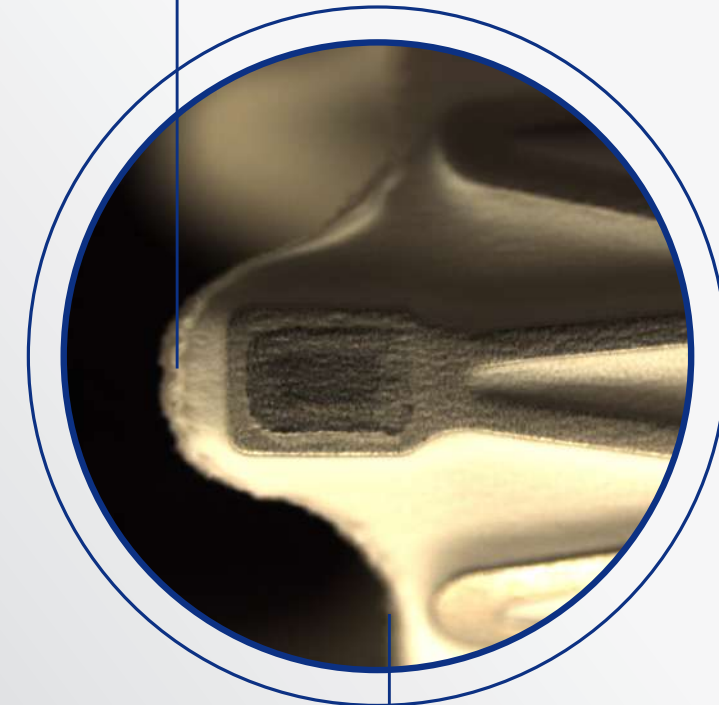
## Encapsulation technology

iCover is a stent completely encapsulated with 2 ePTFE layers



## Specific ePTFE laser cutting technology

• Perfect sealing



The laser follows the stent outline while cutting the contour



Proprietary technology to encapsulate the stent into an inner and outer ePTFE layer

**Ensures complete encapsulation avoiding delamination**

# iCover features

- > Over the wire catheter (OTW)
- > Guidewire compatibility: **0.035"**
- > Catheter length: **80** and **140** cm
- > NP: 9 atm
- > RBP:
  - Ø 5-7mm: 15 atm
  - Ø 8mm: 14 atm
  - Ø 9-10mm: 13 atm
- > Maximum post-expansion:
  - Ø 5-8mm: ≤10mm
  - Ø 9-10mm: ≤ 12mm
- > CoverTech encapsulation technology
- > Introducer compatibility  
**6F** (up to Ø8mm, L 17mm), **7F** (≥8mmØ, L27mm)
- > **3 radiopaque markers** at each stent end
- > Stent material: CoCr L605
- > Graft material: ePTFE
- > Recoil: ≤ 10 %
- > Shortening:
  - Length 17mm: ≤ 12 %
  - Length 57mm: ≤ 8 %

Product with CE mark, certified by Notified Body 0318

Effective catheter length (cm)	Stent diameter (mm)	Stent length (mm)			
		17	27	37	57
80	5	SPCBCC35080050017	SPCBCC35080050027	SPCBCC35080050037	SPCBCC35080050057
	6	SPCBCC35080060017	SPCBCC35080060027	SPCBCC35080060037	SPCBCC35080060057
	7	SPCBCC35080070017	SPCBCC35080070027	SPCBCC35080070037	SPCBCC35080070057
	8	SPCBCC35080080017	SPCBCC35080080027	SPCBCC35080080037	SPCBCC35080080057
	9		SPCBCC35080090027	SPCBCC35080090037	SPCBCC35080090057
	10		SPCBCC35080100027	SPCBCC35080100037	SPCBCC35080100057
140	5	SPCBCC35140050017	SPCBCC35140050027	SPCBCC35140050037	SPCBCC35140050057
	6	SPCBCC35140060017	SPCBCC35140060027	SPCBCC35140060037	SPCBCC35140060057
	7	SPCBCC35140070017	SPCBCC35140070027	SPCBCC35140070037	SPCBCC35140070057
	8	SPCBCC35140080017	SPCBCC35140080027	SPCBCC35140080037	SPCBCC35140080057
	9		SPCBCC35140090027	SPCBCC35140090037	SPCBCC35140090057
	10		SPCBCC35140100027	SPCBCC35140100037	SPCBCC35140100057

- Introducer compatibility: **6F**
- Introducer compatibility: **7F**

Distributed by:



Manufactured by:  
Life Vascular Devices Biotech, S.L  
[www.ivascular.global](http://www.ivascular.global)  
[info@ivascular.global](mailto:info@ivascular.global)